



## Inspection & Testing of Crush Barriers & Handrails

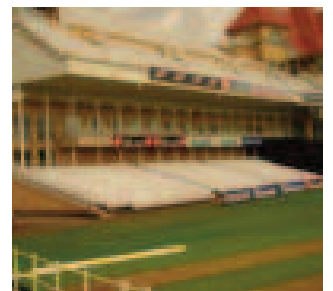
Several serious crowd related accidents have occurred in sports grounds over the years which has led to increased Health & Safety awareness and the requirement for safety certification to be in place.



It is the responsibility of the Club and Stadia officials to ensure that the recommendations given in the new HMSO publication "Guide to Safety at Sports Grounds" (Green Guide) Fifth Edition (2008) are implemented.

Kiwa CMT Testing's Structural Investigation Division has been involved with the Risk Assessments and testing of crush barriers and the like for over 20 years.

**“Ensuring a secure environment for the sporting spectator”**



Kiwa:  
the home of  
independent, high  
quality testing



## How can we help?

**For a complete cost-effective inspection and testing service that has been employed by many authorities and Stadia management in the UK including:**

- Old Trafford (Manchester Utd FC)
- Stamford Bridge (Chelsea FC)
- Ascot Racecourse
- Aintree Racecourse
- Headingley Rugby Stadium
- Trent Bridge Cricket Ground



### Other Services:

As an inspection, testing and investigation company with over 35 years of service to the construction, civil engineering, environmental and associated industries. Kiwa CMT Testing provides our clients with a comprehensive scope of laboratory and site testing and investigative operations, under the following headings:

- Contaminated Land
- Offsite Disposal
- Chemical Analysis
- Concrete & Mortar
- Building Products
- Geotechnical Investigations
- Lighting Column Testing
- Structural Investigations
- Sports Stadia Barrier Testing

**We provide key on-site and off-site investigative, consultative and testing services. For our clients we are 'The Obvious Choice'.**



**Kiwa CMT Testing is UKAS accredited to  
BS/EN/ISO/IEC 17025**

### How to contact us

Please call us on +44 (0)1332 383333  
or email: [cmtenquiries@kiwa.co.uk](mailto:cmtenquiries@kiwa.co.uk) and  
we will get straight back to you. Why?  
Because we like to help>

[www.kiwa.co.uk](http://www.kiwa.co.uk)

Kiwa CMT Testing  
Unit 5 Prime Park Way  
Prime Enterprise Park  
Derby.  
DE1 3QB

**Telephone:** +44 (0) 1332 383333  
**Fax:** +44 (0) 1332 602607  
Email [cmtenquiries@kiwa.co.uk](mailto:cmtenquiries@kiwa.co.uk)  
**Web:** [www.kiwa.co.uk](http://www.kiwa.co.uk)